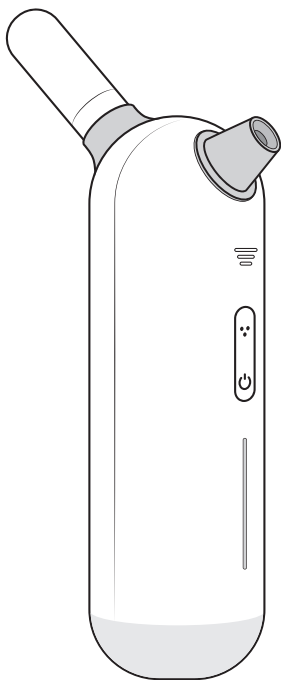


SKIN+ACT

NANO OXYGEN SPRAYER

SKU24712



Instruction Manual

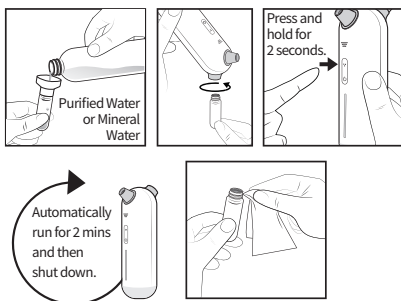
SKINACT

Los Angeles, CA

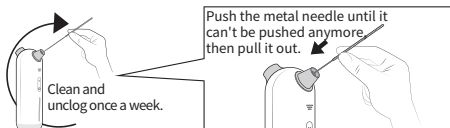
www.skinact.com

Cleaning & Maintenance

1. Essence that is too viscous may clog the pipeline. Please fill the essence bottle with clean water after each use. After turning on the device, press and hold the gear button for 2 seconds to enter the cleaning mode. This process helps to keep the pipeline smooth and ensures cleanliness and hygiene at the same time.



2. Please use the provided metal needle to clean the nozzle regularly to prevent pipe clogged or spray problems caused by crystallization. Unclogging once a week is recommended.




Appendix

Name and content of hazardous substances in the product						
Part Name	Hazardous Substances					
	Lead (Pb)	Mercury (Hg)	Cadmium (Cd)	Hexavalent Chromium (Cr (VI))	Polybrominated Biphenyls (PBB)	Polybrominated Diphenyl Ethers (PBDE)
Plastic Shell	0	0	0	0	0	0
Connecting Wires	0	0	0	0	0	0
Metal Hardware	0	0	0	0	0	0
Circuit Board Components	x	0	0	0	0	0
Screws and Nuts	x	0	0	0	0	0
Accessories	0	0	0	0	0	0

This form is prepared in accordance with the provisions of SJ/T 11364

0 : Indicates that the content of the hazardous substance in all homogeneous materials of the component is below the limit requirements specified in GB/T 26572.

X : Indicates that the content of the hazardous substance in at least one homogeneous material of the component exceeds the limit requirements specified in GB/T 26572.

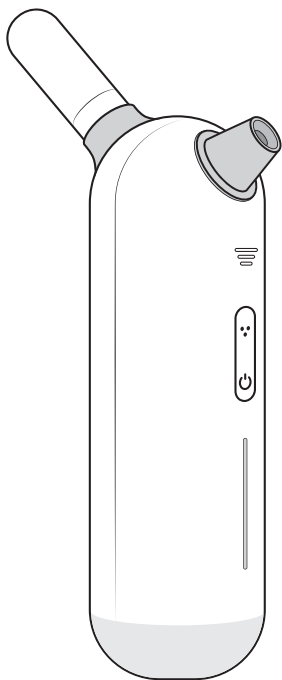


1. This electronic product contains certain harmful elements and can be used with confidence within the environmental protection period, which is 10 years from the date of production.
2. During the environmental protection period, please use this product according to the instruction manual.
3. This environmental protection use period does not cover consumable parts: batteries.

SKIN+ACT

NANO OXYGEN SPRAYER

SKU24712



Instruction Manual

Safety Precautions



Danger

1. Before cleaning the product, be sure to pull out the plug from the socket in advance.
2. Please do not drop the product into water or other liquids.
3. If the product accidentally falls into the water while charging, please pull out the plug immediately and do not directly touch the product that fell into the water.
4. Do not use it while driving, taking a bath, or showering.
5. Do not use this product in flammable and explosive places such as gas stations, high dust workshops, and around gas.
6. Please do not use this product in a humid, high-temperature, or high-electromagnetic environment.
7. This product contains lithium batteries. Please do not disassemble, modify, or throw it into fire to avoid danger.



Warning




1. Please stop using the product when its charging cable is damaged and can not work properly, or when the product is dropped or falls into water.
2. Do not use this product if you have a pacemaker, artificial heart-lung machine, or other medical equipment in your body.
3. Do not use this product when the skin is injured, red, inflamed, congested, open wound, or otherwise unsuitable for other conditions.
4. Do not use it with other medical devices or more than 2 units of this product at the same time.
5. If you feel any physical discomfort during or after use, please stop using this product immediately and consult a doctor.
6. This product is a personal care product and cannot be a substitute for professional medical treatment and health care. If you have any questions or needs, please consult before using.
7. Please keep this product out of the reach of children. Do not let children use it. Otherwise, it may cause an accident or cause personal injury.
8. If you are not sure whether you have the above conditions or not, please consult the doctor in advance.



Precautions

1. Do not spray directly into the eyes or mouth when using the product.
2. Do not use alcohol, thinner, gasoline, nail polish remover, or other solvents to wipe the machine. Otherwise, it may damage the surface of the machine.
3. Do not place it in an unstable place. Please prevent the machine from falling or being bumped. Otherwise, it may cause mechanical failure or injury due to the machine falling.

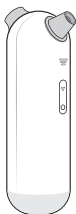
Please read the instruction manual carefully before use and use the instrument correctly after understanding the safety precautions. The safety precautions and contents marked in the instruction manual must be followed and the instrument must be operated correctly. There are 3 points below regarding the risk of incorrect handling and use. The following contents must be mandatory in the instruction manual.

 Danger	 Warning	 Precautions
<p>Ignoring the contents of this symbol and using it incorrectly could result in death or serious injury.</p>	<p>Ignoring the contents of this symbol and using it incorrectly may result in death or serious injury.</p>	<p>Ignoring the contents of this symbol and using it incorrectly may result in injury or financial loss.</p>

***If consumers fail to comply with the safety precautions in the instruction manual, resulting in damage to property, body and mind, the company will not be held responsible.**

Product Information

Product List



Nano Oxygen Sprayer

Main Machine

Accessories List



Charging Cable
(USB Type-C) x1



Essence Bottle x2



Funnel x1



Metal Needle x1

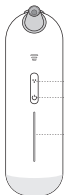


Storage Bottle x1




Manual x1

Product Structure



- Intensity Button/Clean Button
- Power Button
- Level 1~ Level 3 intensity indicator lights from bottom to top

Product Parameters

Product Name	Nano Oxygen Sprayer
Product Model	SKU24712
Dimension	177*86*47mm
Charging Interface	Type-C
Working Voltage/Current	DC 5V  1A
Rated Wattage	6.5W
Lithium Battery	3.7V, 650mAh
Charging Time	80-120 Minutes

Function and Usage Instructions

Power Button

1. In the OFF state, press and hold the [Power Button] to turn on the machine. The buzzer will “beep” once, the white breathing light will light up (for a period), and the spray will be turned on.
2. Short press the [Power Button] to pause. When the spray is paused, the intensity indicates light stays on.
3. Press and hold the [Power Button] again to turn off the machine. The buzzer will “beep” twice, and the white breathing light will turn off.

Intensity Button (Level 1-2-3 can be switched)

1. Enter the spray state after turning on the machine, and the machine is a default setting to “Level 1” pressure intensity.
2. Press the [Intensity Button] to adjust the pressure intensity, that is, switch between Level 1, Level 2, and Level 3.
3. Each time you switch the intensity levels, the buzzer will make a “beep” sound. The first segment indicator light corresponding to the “Level 1” lights up. The second segment indicator light corresponding to the “Level 2” lights up. The three-segment indicator light corresponding to the “Level 3” lights up.
4. In any working state (pause/spray), short press the [Intensity Button] to switch the pressure intensity and switch the sequential level: Level 1-2-3 corresponding to Gentle-Regular-Strong.

Clean Mode

1. In any working state (pause/spray), press and hold the [Intensity Button] for 2 seconds, the buzzer will “beep” once and enter the clean mode.
2. The clean mode will use the maximum power for 2 minutes and shut down after clean is completed.

Standby & Automatic Shutdown

1. In any working state (pause/spray), press and hold the [Power Button] for 2 seconds and then turn off the machine.
If there is no operation for 5 minutes, it will automatically shut down; the buzzer will “beep” twice to prompt shutdown.

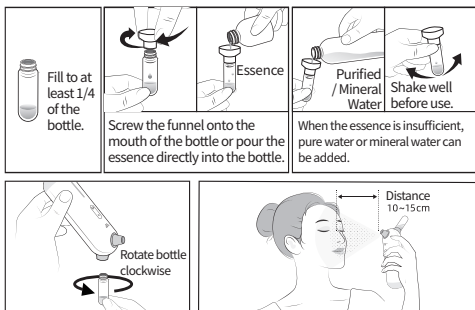
Operating Instructions

Preparations before starting up

Please make sure the machine has sufficient power.

Bottle Installation Instructions

Please pour the essence or ready-to-use liquid into the bottle through a funnel or pour the essence directly into the bottle, turn the device upside down to combine with the mouth of the bottle, and screw the bottle into the product.
It can be used with the body upright.



Turn On/OFF Machine

Press and hold the [Power Button] for 2 seconds to turn ON or OFF the machine. The buzzer will beep once when the machine is turned on and twice when it is turned off.

Spray Intensity Adjustment

1. Press and hold the power button for 2 seconds to turn on and off the machine.
2. The startup buzzer beeps once, and the shutdown buzzer beeps twice.
3. Turn on the machine, enter spray mode, and stay in the default "Level 1".
4. The spray intensity is adjustable. Short press the [Intensity Button] to adjust the spray to Level 1 (Gentle), Level 2 (Regular), and Level 3 (Strong).
5. The first-segment white breathing lights ON means "Gentle".
6. The second-segment white breathing lights ON means "Regular".
7. The third-segment white breathing lights ON means "Strong".
8. Each time an intensity level is switched, the buzzer beeps once.

Insufficient Battery Prompt

The buzzer beeps twice continuously, the orange breathing light flashes 3 times and then shuts down.

Charging Display

When charging, the indicator light changes to orange "breathing" mode, and when fully charged, the indicator light turns solid green.

Sound Prompt

1. Press and hold the power button for 2 seconds to turn on the machine. The buzzer will sound once.
2. Each time you press the button, the buzzer will sound.
3. Shutdown prompt sound: Press and hold the [Power Button] for 2 seconds in any working mode, the buzzer will sound 2 times and then shut down.
4. Automatic shutdown: It will automatically shut down after 5 minutes of standby without any operation.

Operation Angle

Please keep it vertical or tilt it towards the ground to avoid poor flow of solution.

