

COMBINAL

LASH & BROW EXPERT

Eyelash Lifting



EYELASH LIFTING BENEFITS:

1. Our COMBINAL Eyelash Lifting for the Lashes is perfect for those looking to add volume and a more defined semi-permanent lash uplifting curve.
2. With our COMBINAL LASH LIFTING, natural straight lashes are given an upward lift, and the lashes appear longer and look fuller.
3. Hairs are coaxed into place and then given a mini-perm to add a natural-looking curve for a fuller and more defined lash.
4. Everything stays lifted and in the best shape for perfectly lifted lashes, giving an open-eye effect.



WHY DO AN EYE LASH LIFT?

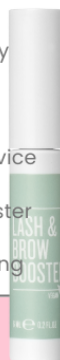
1. Giving the appearance of fuller, longer lashes, with an open-eye look which makes the eyes appear bigger and gives them a beautiful, charismatic expression.
2. Immediately visible results that can last up to 4-5 weeks.
3. Eyelash lifting gives more volume and curves for a fuller-looking lash.
4. Easy add-on to any facial and easy to apply.
5. The Lifting Lotion is used to treat the keratin structure of the eyelashes. The Fixing Lotion is used to keep the long-lasting, upward lift effect; in addition, the Silicone Pad helps to give the lashes the perfect shape.



BEFORE TREATMENT:

Prior to starting an eyelash lifting treatment:

1. Proceed by filling out a customer questionnaire form and carry out a PATCH TEST
 2. Explain the treatment procedure to clients.
 3. Make the client aware of the expected results and benefits.
 4. Explain the after-treatment care to the client to make the service last longer.
 5. Sell the important benefits of Velvet Lash, Keralash, Lash Booster and Expert Eye Treatment Cream
- *KEEP reading below for CAUTIONS / CONTRACTIONS, Eyelash Lifting



COMBINAL | EYELASH LIFTING

LASH & BROW EXPERT

1st Step

CLEANSE, PRIME, DRY

1. Follow the instruction leaflet provided with each kit.
2. Sanitize your hands before you begin.
3. Contact lenses must be removed.
4. Cleanse the eye area and eyelashes thoroughly with Combinal oil-free Makeup Remover. Use the COMBINAL Priming Lotion to prepare the Eyelashes and clean them of any oil or debris with fuzz-free brushes.
5. The client must now close their eyes and should not open them throughout the application time.
6. Now cleanse the eyelids and lashes with Combinal Priming Lotion. Any oily grease on the eyelashes must be removed thoroughly with the Priming Lotion and a cotton swab. Make sure that the lashes are exempt from oil and dirt. Lashes must be completely clean and dry before starting the application. Let the Eyelashes air dry, or use a Handheld Lash and brow fan.



2nd Step

POSITION, GLUE, (CORRECT)

*The secret is in the details. The silicone pads are different in shape, flat on one side and curved on the other, which helps to provide a curve to the lashes.

1. Brush through the lashes with the applicator comb to separate them from each other.
2. Now select the correct size of silicone pads in each case, depending on the length of the lashes. Choose from 3 different sizes: S, M, or L.
S = strongest lifting effect, suitable for short eyelashes.
M = medium lifting effect, suitable for normal eyelashes.
L = light lifting effect, suitable for long eyelashes.
The shorter the eyelashes, the smaller the pad should be used; for the optimal result, the lash length should cover only half of the pad.
3. Apply glue on the inside surface of the silicon pads (incl. both ends) and let it dry. Then, place the pads directly on the upper eyelid close to the lash lines. Make sure that the silicone pad is placed properly and does not slip.
4. Place some glue on the surface of the silicone pad. Allow the glue to settle in (dry). Now, fix the lashes on the silicone pads with an upward twisting motion using the applicator comb. Make sure the eyelashes are separated individually, and lay evenly straight upward on the pads. The lashes must adhere evenly.
(When all lashes are placed evenly, the customer must briefly open their eyes to separate lashes from the lower eyelid.)



COMBINAL | EYELASH LIFTING

LASH & BROW EXPERT

3rd Step



LIFTING LOTION, TIME, REMOVE

1. Now apply the Lifting lotion with the brush. Cover the lashes from the lash line to the middle, excluding the tips of the lashes. This is very important: don't cover the tips with lotion.

Processing time: 10 minutes.

Depending on the natural eyelashes, the stronger the lashes extend the residence time to about 2-3 minutes. After the processing time, remove the lotion thoroughly from the eyelashes with a dry cotton swab.



Apply Lifting Lotion



Remove Lifting Lotion



Apply Fixing Lotion



Remove Fixing Lotion

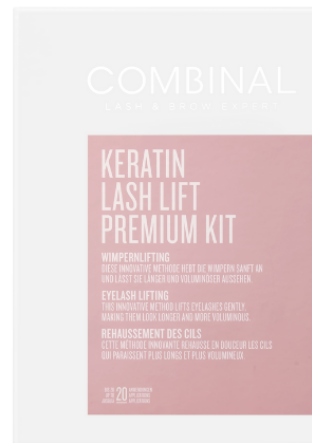
4th Step



FIXING LOTION, TIME, REMOVE

1. Apply the Fixing Lotion with the brush on the lashes. Do not cover the tips with lotion. Processing time: 10 minutes. After the processing time, remove the lotion thoroughly from the eyelashes with a dry cotton swab.

2. Now, Step #5, the cream hair dye procedure can start if this is requested.



COMBINAL | EYELASH LIFTING

LASH & BROW EXPERT

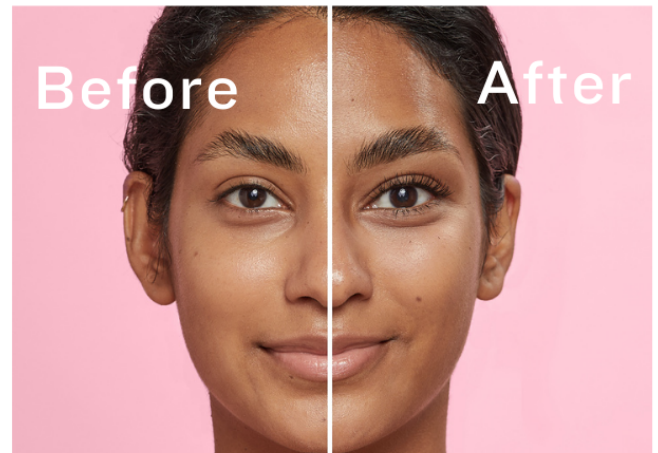
5th Step

COMBINAL CREAM COLOR HAIR DYE

1. Now, the cream hair dye procedure can start if this is requested. Add the black COMBINAL Silicone pads under the eye area.
 2. Mix desired color with COMINAL 3% or 5% developer. Apply Cream Color Hair Dye and allow the hair to process for 3-5 min.
 3. Then, gently remove the cream hair dye with a cotton pad and water. Remove excess color on the skin with COMBINAL Color Cleanse. Remove the silicone pads with water. Cleanse the eyelids with an oil-free makeup remover. Comb the lashes with the applicator comb to remove adhesive residue.
 4. Finally, apply Velvet Lashes conditioner onto the lashes.
- NOTE: for best results
You must clean the eye area and eyelashes thoroughly with the PrimingLotion. Never spread the lotions; use tapping motions. This is important for the best results! Never use the same brush for different lotions because if both lotions come into contact with each other, they become useless. Therefore, clean the brush always thoroughly after each use.



EYELASH LIFTING BENEFITS *Before and After*



CAUTION

CONTRAINDICATIONS FOR EYELASH LIFTING:

DO NOT USE EYELASH LIFTING ON:

1. Sensitive or irritated skin or have any ingredient-related allergies.
2. Pathological skin conditions like eczema or psoriasis.
3. Open wounds or scaly skin around the application area. Swelling or redness. Conjunctivitis or other eye issues or infections.
5. Weak or too-thin eyelashes, Sensitive eyes.
6. To reach the wishes and expectations of your customers, you should have a conversation with your clients before the treatment
7. Wash and disinfect hands thoroughly before each treatment.
8. Remove contacts before the Eyelash Lifting service.