

Aluminum Trolley Makeup Studio With LED And Bluetooth, Chic By SkinAct



Spa & Equipment SKIN+ACT

Toll Free: 1.800.418.0830

www.skinact.com
www.spaandequipment.com

International: 818.834.6640

Copyright © 2023 Spa and Equipment, All Rights Reserved

NOTICE

No part of this document may be photocopied, reproduced, or translated into any other language without prior written consent of Spa and Equipment/SkinAct.

The information in this document is subject to change without notice at any time and should not be construed as a commitment by Spa and Equipment/SkinAct.

Spa and Equipment/SkinAct assumes no responsibility for any errors that may be in this document, nor does it make expressed or implied warranty with regard to this material, including, but not limited to, the implied warranties of merchantability and fitness for a particular purpose.

Spa and Equipment/SkinAct shall not be liable for incidental or consequential damages arising out of the furnishing, performance, or use of this document and the program material which it describes.

Spa  Equipment SKIN+ACT

Toll Free: 1.800.418.0830

www.skinact.com
www.spaandequipment.com

International: 818.834.6640

Measurements



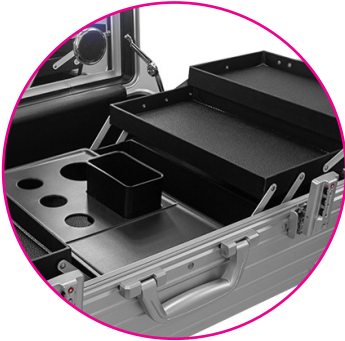
Measurements



Highlights

Makeup Studio Case with Rolling Stand and Lights

This stylish and functional makeup case offers the perfect solution for organizing your cosmetics, whether you're a professional makeup artist or an everyday enthusiast.



Spacious Compartments

Spacious Compartments: Multiple pull-out trays and compartments provide ample space for storing all your makeup essentials, keeping everything neatly organized and easy to find.



Integrated Lighting

Durable Construction: The high-quality aluminum build ensures lasting protection for your cosmetics during travel or daily use, while remaining lightweight for easy transport.

Portable Design: A built-in rolling stand with wheels makes for effortless transport, while comfortable handles offer carrying flexibility. Secure locking mechanisms keep your makeup secure.



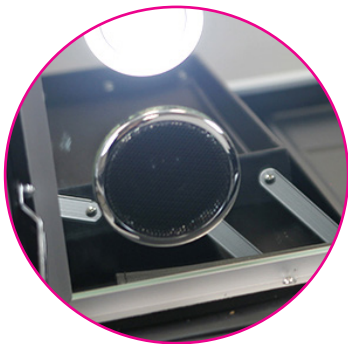
Secure Locking Mechanism

Integrated Lighting with Adjustable Color Temperature: Switch between warm and cool light settings to achieve optimal illumination for flawless makeup application in any environment.

Bluetooth Speakers: Sync your smartphone or tablet to the built-in Bluetooth speakers and enjoy your favorite music or tutorials while creating your perfect look.



Room Temperature Display



Speakers

Room Temperature Display: Monitor the ambient temperature to ensure optimal comfort during your makeup routine. (This feature is new and not previously mentioned)

Versatile Functionality: The cube-shaped design maximizes space, while the rolling stand and compartments cater to both professional and personal use.

Stylish Design: The sleek black finish adds a touch of sophistication to your beauty routine.

Smooth-Rolling Wheels: Effortlessly maneuver the studio with its smooth-rolling wheels, allowing for easy transport wherever you go.

Easy Maneuverability: The telescopic handle and smooth-rolling wheels ensure effortless navigation through any space.

Key Features:

Dimensions: 22.83" x 17.72" x 8.86"

Material: Aluminum

Color: Black

Durability: Semi-Hard

Water Resistance: Yes

Closure: Zipper

Mobility: Built-in Trolley System

Exterior: Molded EVA Shell with PU Leather Accents

Type: Case

Ports: USB